

# ELECTRIC SUBMERSIBLE SEWAGE PUMPS



**caprari**

pumping power

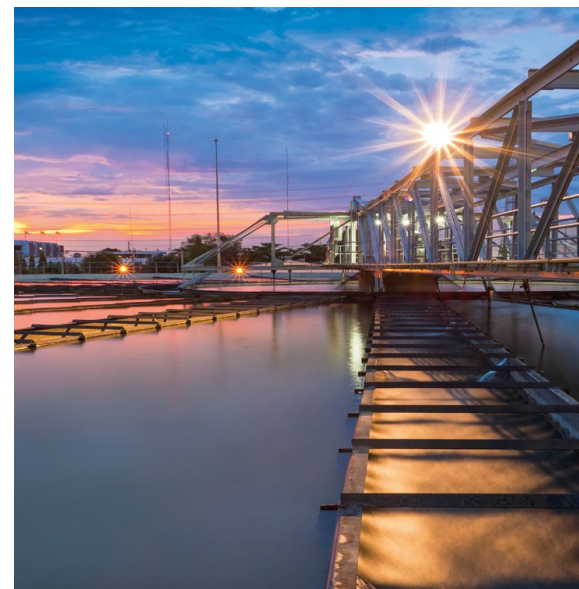


**NEW  
GENERATION**

# THE PUMP THAT NEVER STOPS



**caprari**



THE SAME PUMP FOR **ALL APPLICATIONS**

**IDEAL FOR**

**WASTEWATER TRANSPORT**

**WASTEWATER TREATMENT**

**INDUSTRY**

**STORMWATER**

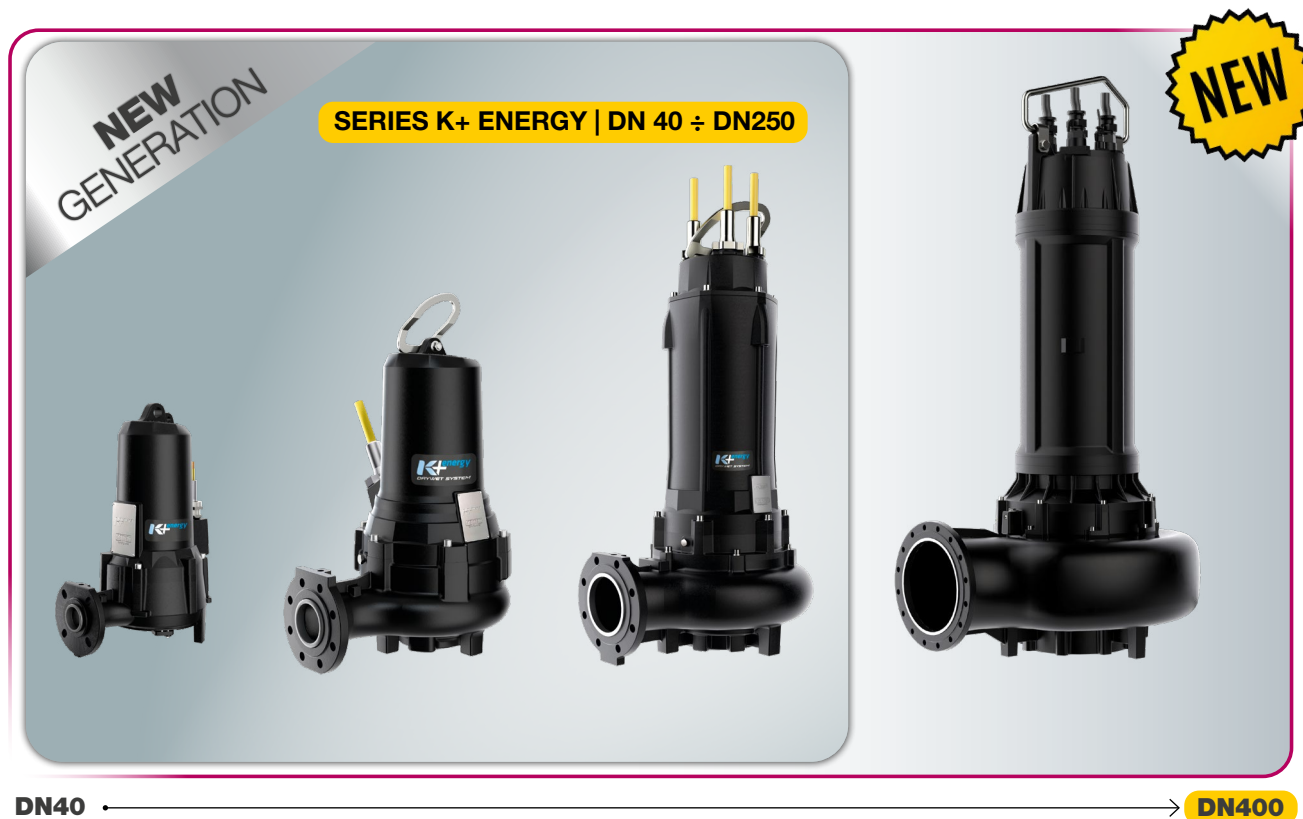


## THE NEW GENERATION OF PUMPS IN THE WORLD OF WASTEWATER

The wide range of the K+ series is designed **to pump wastewater** containing gases and solids

The excellent performance of the hydraulic profiles ensures **maximum efficiency**

The special compact size of the pump ensure **total reliability** and **ease of installation**



### TECHNICAL FEATURES

Flow rate up to 1200 l/s	Head up to 67 m	Power up to 260 kW	Frequency 50-60 Hz	ATEX version Yes
-----------------------------	--------------------	-----------------------	-----------------------	---------------------



IN WET PIT



IN DRY CHAMBER

## WHY CHOOSE K+ ENERGY?

Electrical efficiency, hydraulic performance and Caprari international patents for **the best wastewater pump in the world**



### IE3 ELECTRICAL EFFICIENCY CLASS

K+ Energy pumps are designed to ensure high efficiency and reduced energy costs

Exclusive



### ANTI-CLOGGING SYSTEM

1. The **widest free passages** on the market
2. **Maximum durability** of mechanical seal
3. Impeller **cleaning** and axial thrust compensation for bearing **protection**
4. **Anti-sedimentation system** for solids

International Patent

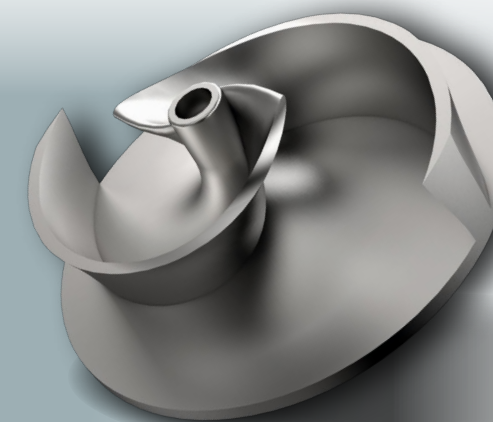


### OIL COOLING SYSTEM

1. Application **versatility**
2. **Simple** operation
3. **Maximum operating efficiency**

# new

The **K+ ENERGY** range is now more extensive thanks to the new electric pump models with **twin-blade open impeller**, which ensure **excellent efficiency above 80%**.



### HIGH EFFICIENCY IMPELLER

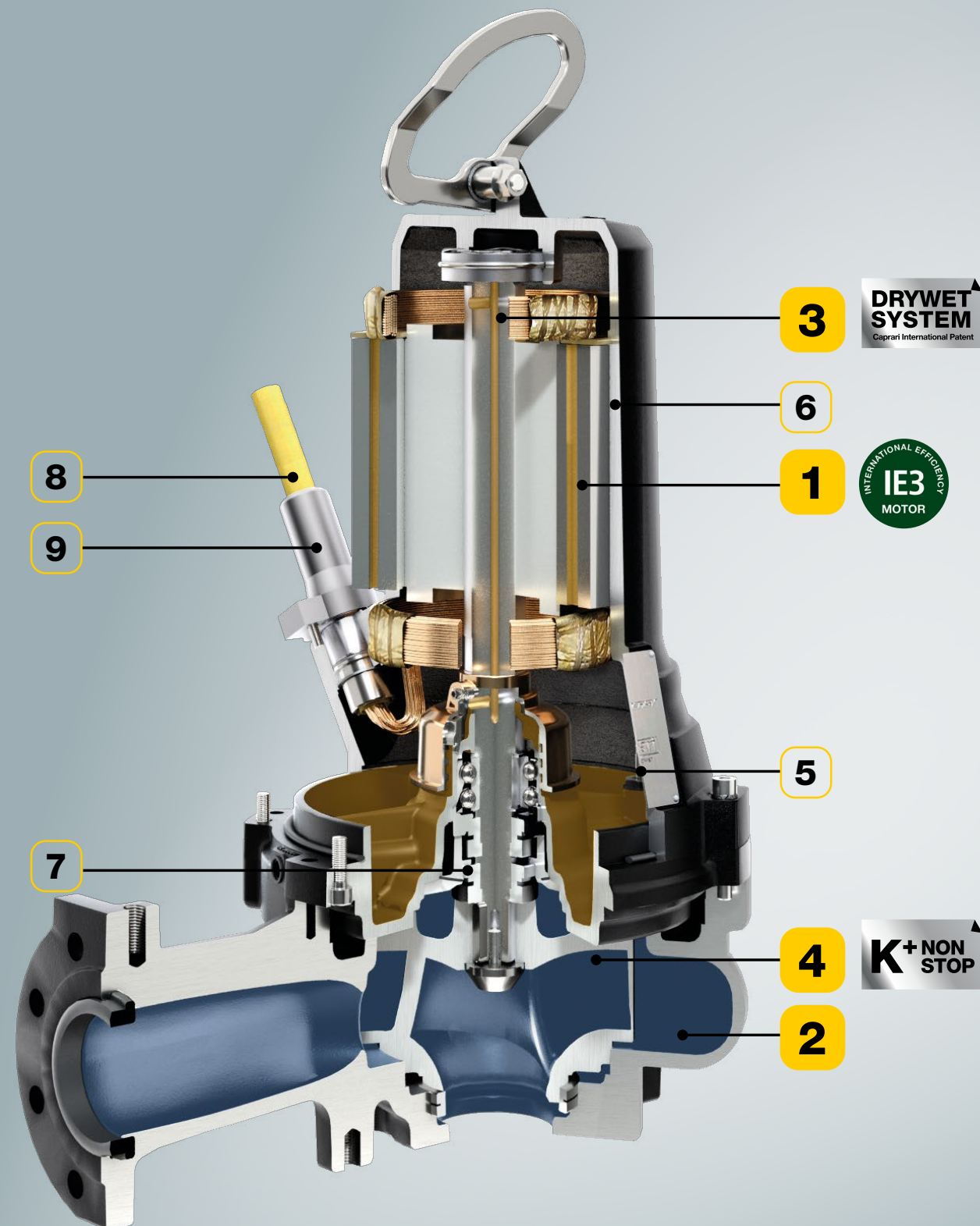
- **Open twin blade** construction: **efficiency above 80%**
- Maximum **wear resistance**: hardened cast iron

### IMPELLER SETTING SYSTEM



- **Fast impeller disc setting** through external screw
- **Easy maintenance**

## THE BEST PUMP IN THE WORLD OF WASTEWATER



### 1 IE3 ELECTRICAL EFFICIENCY CLASS

- **High motor efficiency**
- **Reduced energy costs**

### 2 HIGH-EFFICIENCY HYDRAULICS

- **Painted surfaces:** hydraulic profile optimization with high-level finish

### 3 OIL COOLING SYSTEM

- **Standard** on all models
- **S1 operation** in dry chamber

*International Patent*

### 4 ANTI-CLOGGING SYSTEM

- **The widest free passages** in the market
- **Maximum operational safety**

*Exclusive*

### 5 CONDUCTIVITY PROBE IN OIL CHAMBER

- **Standard** on all models even for ATEX version
- **Motor protection:** the alarm signal is sent to the panel in case of failure of the first mechanical seal

*International Patent*

### 6 H CLASS ELECTRICAL INSULATION

- **The best resistance** to thermal changes (up to 180 °C)
- **Longer service life** of the motor

### 7 DOUBLE MECHANICAL SEAL

- **Double protection** of the electric motor
- **Commercial type seals:** easy to find
- **Ease of access:** it is not necessary to remove the motor to replace the seals

### 8 NSSHOU-J DOUBLE SHEATH CABLE

- **The best resistance** to liquids containing chemicals and oils
- **The best mechanical and thermal resistance**

*Exclusive*

### 9 EASY MAINTENANCE PLUG

- **Easy to disconnect** and **lower maintenance time:** the electric cable can be unplugged from the pump



## VISIT

**[www.caprari.com](http://www.caprari.com)**

Leaflets and brochures  
can be consulted at any time  
and from any device



## REGISTER on our business pump selector

Thanks to iPump,  
the best solution for your needs  
just a click away



## DOWNLOAD iPump mobile

All catalogues available  
on smartphones and tablets even  
after downloading in offline mode



## SUBSCRIBE to our newsletter from the site

To be updated on the latest  
news and events

## FOLLOW US



## WRITE TO US

**[info@caprari.it](mailto:info@caprari.it)**

ISO 9001  
ISO 14001  
ISO 45001

BUREAU VERITAS  
Certification



Pump Control Technology

Water Collection and Distribution

Boosting and Distribution of surface water

Wastewater Transport and Treatment