

ELECTRIC SUBMERSIBLE SEWAGE PUMPS



caprari

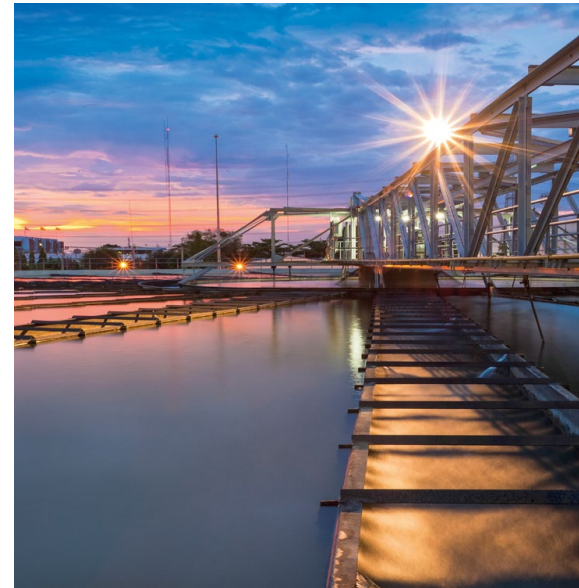
pumping power

**NEW
GENERATION**

THE PUMP THAT NEVER STOPS



caprari



THE SAME PUMP FOR ALL APPLICATIONS

IDEAL FOR

WASTEWATER TRANSPORT

WASTEWATER TREATMENT

INDUSTRY

STORMWATER

THE NEW GENERATION OF PUMPS IN THE WORLD OF WASTEWATER

The wide range of the K+ series is designed to pump wastewater containing gases and solids

The excellent performance of the hydraulic profiles ensures **maximum efficiency**

The special compact size of the pump ensure **total reliability** and **ease of installation**



DN40 → DN400

TECHNICAL FEATURES

Flow rate up to 1200 l/s	Head up to 67 m	Power up to 260 kW	Frequency 50-60 Hz	ATEX version Yes
-----------------------------	--------------------	-----------------------	-----------------------	---------------------



IN WET PIT



IN DRY CHAMBER

WHY CHOOSE K+ ENERGY?

Electrical efficiency, hydraulic performance and Caprari international patents for **the best wastewater pump in the world**



IE3 ELECTRICAL EFFICIENCY CLASS

K+ Energy pumps are designed to ensure high efficiency and reduced energy costs

Exclusive



ANTI-CLOGGING SYSTEM

1. The **widest free passages** on the market
2. **Maximum durability** of mechanical seal
3. Impeller **cleaning** and axial thrust compensation for bearing **protection**
4. **Anti-sedimentation system** for solids

International Patent

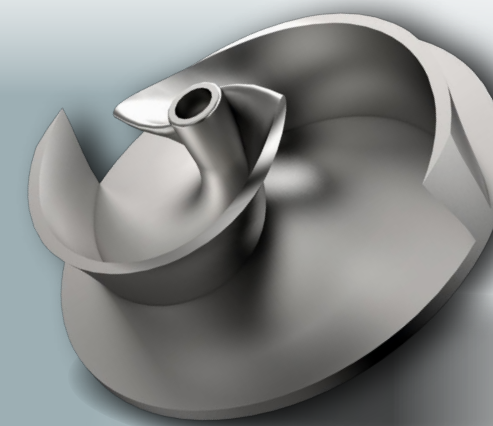


OIL COOLING SYSTEM

1. Application **versatility**
2. **Simple** operation
3. **Maximum** operating **efficiency**

new

The **K+ ENERGY** range is now more extensive thanks to the new electric pump models with **twin-blade open impeller**, which ensure **excellent efficiency above 80%**.



HIGH EFFICIENCY IMPELLER

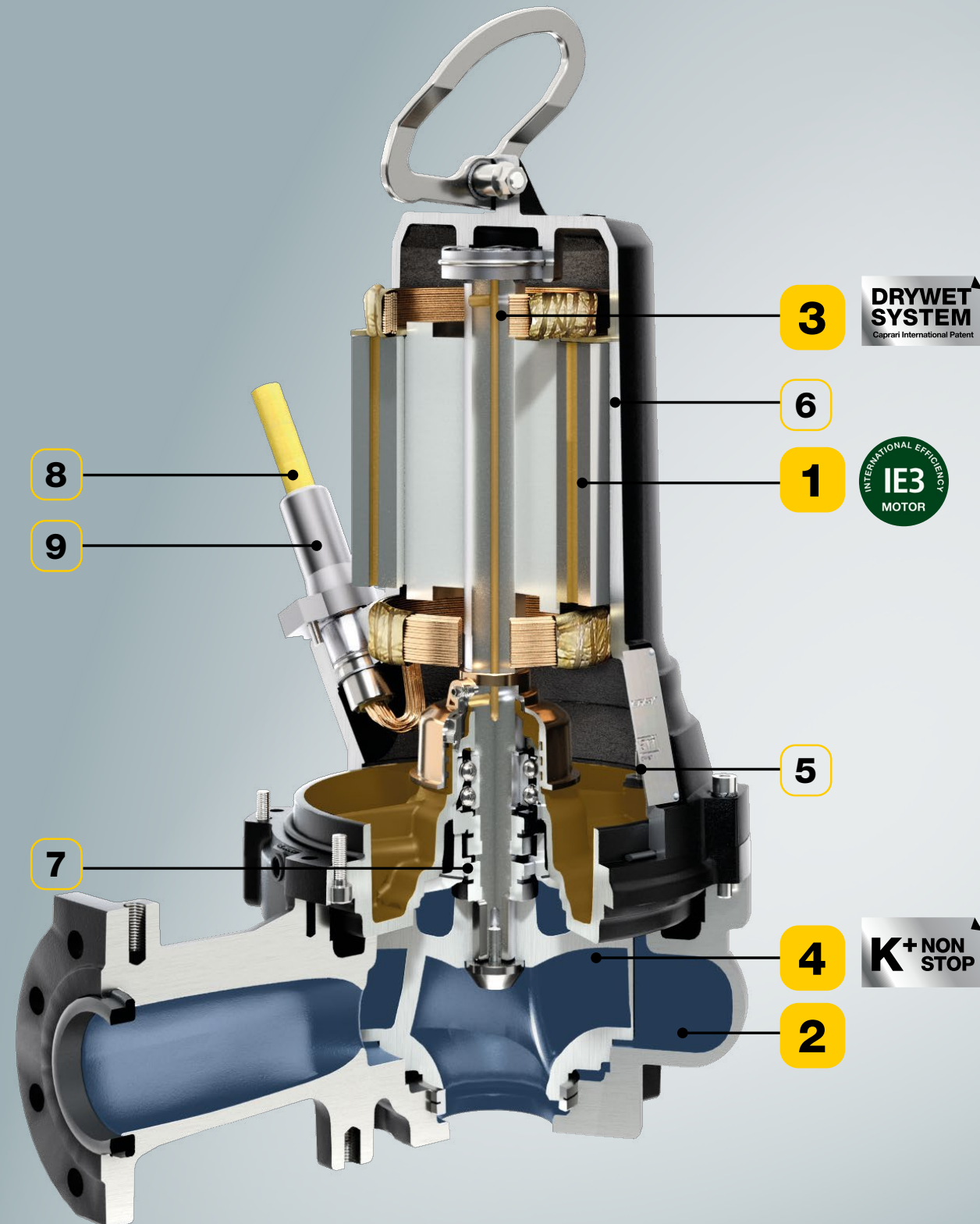
- **Open twin blade** construction: **efficiency above 80%**
- Maximum **wear resistance**: hardened cast iron

IMPELLER SETTING SYSTEM



- **Fast impeller disc setting** through external screw
- **Easy maintenance**

THE BEST PUMP IN THE WORLD OF WASTEWATER



1 IE3 ELECTRICAL EFFICIENCY CLASS

- High motor efficiency
- Reduced energy costs

2 HIGH-EFFICIENCY HYDRAULICS

- **Painted surfaces:** hydraulic profile optimization with high-level finish

3 OIL COOLING SYSTEM

- Standard on all models
- S1 operation in dry chamber

International Patent

4 ANTI-CLOGGING SYSTEM

- The widest free passages in the market
- Maximum operational safety

Exclusive

5 CONDUCTIVITY PROBE IN OIL CHAMBER

- Standard on all models even for ATEX version
- **Motor protection:** the alarm signal is sent to the panel in case of failure of the first mechanical seal

International Patent

6 H CLASS ELECTRICAL INSULATION

- The best resistance to thermal changes (up to 180 °C)
- Longer service life of the motor

7 DOUBLE MECHANICAL SEAL

- Double protection of the electric motor
- Commercial type seals: easy to find
- Ease of access: it is not necessary to remove the motor to replace the seals

8 NSSHOU-J DOUBLE SHEATH CABLE

- The best resistance to liquids containing chemicals and oils
- The best mechanical and thermal resistance

Exclusive

9 EASY MAINTENANCE PLUG

- Easy to disconnect and lower maintenance time: the electric cable can be unplugged from the pump

caprari



VISIT

www.caprari.com

Leaflets and brochures can be consulted at any time and from any device



REGISTER on our business pump selector

Thanks to iPump, the best solution for your needs just a click away



DOWNLOAD iPump mobile

All catalogues available on smartphones and tablets even after downloading in offline mode



SUBSCRIBE to our newsletter from the site

To be updated on the latest news and events

Pump Control Technology

Water Collection and Distribution

Boosting and Distribution of surface water

Wastewater Transport and Treatment

FOLLOW US



WRITE TO US

info@caprari.it

ISO 9001
ISO 14001
ISO 45001

BUREAU VERITAS
Certification

