


A high-angle photograph of a water treatment facility. A large, dark pipe discharges a powerful stream of water into a large, circular tank. The water is turbulent and white with foam. In the foreground, there are metal walkways with railings and other pipes. The overall color palette is dominated by blues and greys.

WATER INDUSTRY SOLUTIONS

caprari



**Water is
our element**

caprari

index

| | |
|--|----|
| our group | 06 |
| our industrial reality | 08 |
| capability to respond to any requirement | 10 |
| a comprehensive and reliable range | 12 |
| exclusive systems and patents | 14 |
| E6÷22 / ENDURANCE E6÷12 | 16 |
| E6NVX E8NVX / P6÷P18 | 17 |
| MAC 6÷14 / MMP 6÷10 | 18 |
| K / KCA | 19 |
| SCC / PM PMA PMXT | 20 |
| NC NCD / NMC | 21 |
| CVX CVD HV / BOOSTER | 22 |
| GREEN BOX / CONTROL SYSTEMS | 23 |
| exclusive technical consultancy | 24 |
| we make a difference in every project | 26 |
| worldwide projects | 30 |
| certified quality | 34 |
| global presence, local service | 36 |

our group

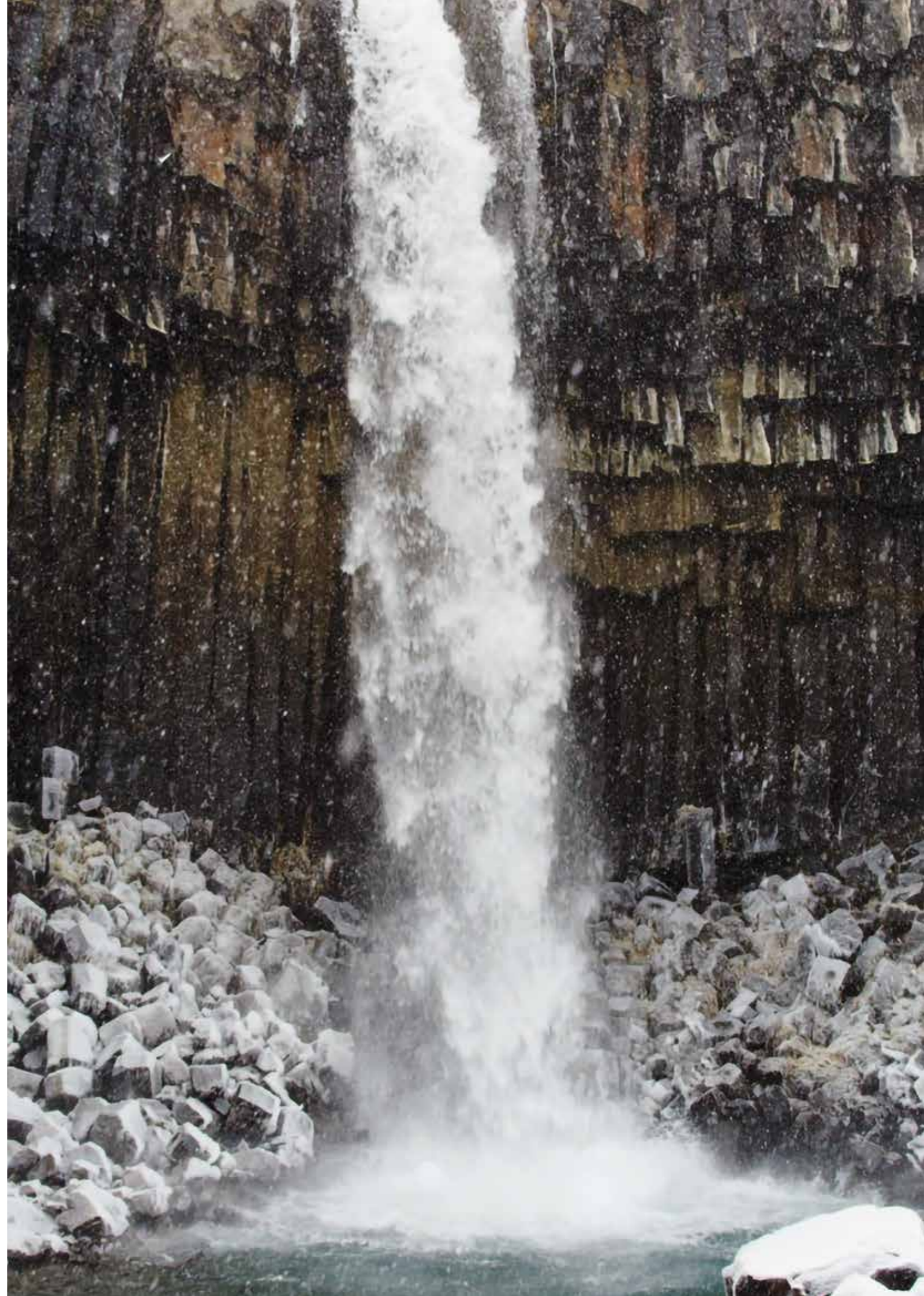


Water is not negotiable

Caprari brings decades of expertise in designing and manufacturing efficient, sustainable water pumping solutions. With a global footprint and a deep understanding of diverse customer needs, we are uniquely positioned to anticipate and respond to challenges in water management.

Our extensive range of fully MADE IN ITALY products embodies flexibility, innovation, and exceptional quality. This dedication ensures our solutions are tailored to meet the highest standards of performance and sustainability.

Wateralia, a strategic industrial holding company formed in 2021 through the collaboration of Caprari and Ambienta – one of Europe's leading asset managers dedicated to environmental sustainability – is committed to providing innovative solutions for the responsible management of water resources.



our industrial reality

1945

year the company was founded

10million

pumps produced

145

countries around the world where we are present

2,100

international partners and distributors

11

subsidiaries

- | | | |
|--|---|--|
|  CAPPRARI ITALIA |  CAPPRARI PUMPS (UK) LTD |  CAPPRARI PUMPS AUSTRALIA PTY LTD |
|  BOMBAS CAPPRARI S.A. |  CAPPRARI HELLAS S.A. |  CAPPRARI PUMPS SHANGHAI CO. LTD. |
|  CAPPRARI FRANCE S.A.S. |  CAPPRARI PORTUGAL LDA |  CAPPRARI TUNISIE S.A. |
|  CAPPRARI PUMPEN GMBH |  CAPPRARI IRELAND | |

3

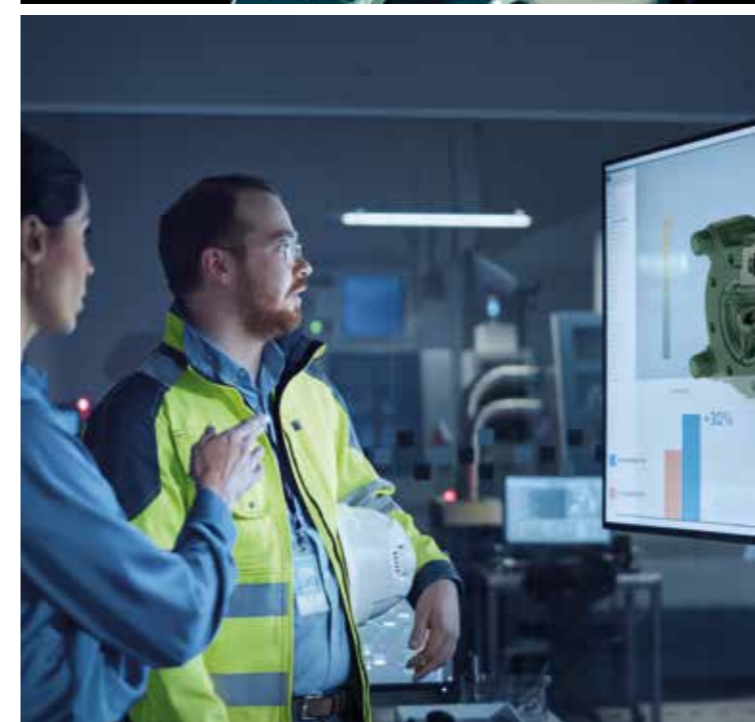
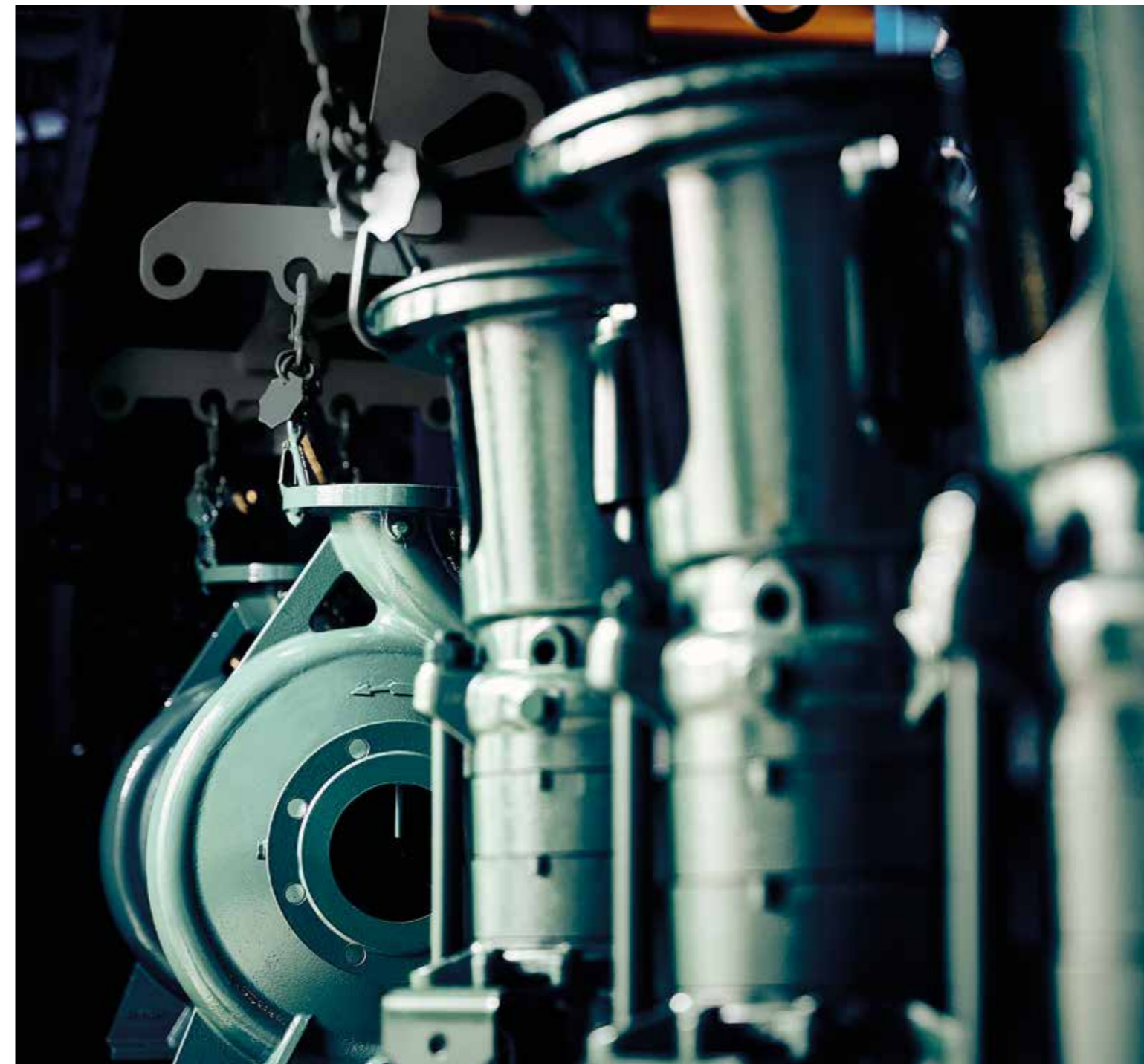
production plants

- | | | |
|---|--|---|
|  MODENA ITALIA |  RUBIERA ITALIA |  KONYA TÜRKIYE |
|---|--|---|

3

sustainability objectives

- | | | |
|---|--|---|
|  2 ZERO HUNGER |  6 CLEAN WATER AND SANITATION |  9 INDUSTRY, INNOVATION AND INFRASTRUCTURE |
|---|--|---|



capability to respond to any requirement

Caprari specializes in developing advanced water pumping solutions for a diverse range of sectors and applications. From initial product design through to rigorous testing, we deliver a comprehensive service that ensures the highest standards of performance and reliability.

This commitment to excellence has earned us the trust of organizations worldwide, including government bodies, private enterprises, OEMs, and engineering firms.

Our objective is to build enduring partnerships founded on mutual satisfaction and trust, fostering shared growth and success with our customers across the globe.



Multi-services

- Municipal water supply
- Wastewater treatment
- Water reuse systems



General contractor

- Fire-fighting protection systems
- Construction site drainage
- Industrial fluid transfer



Public authorities and consortiums

- Aqueducts and distribution networks
- Municipal water treatment
- Irrigation of parks and gardens

a comprehensive and reliable range

High-performance, sustainable solutions that meet the needs of multi-service providers, general contractors and organisations.



E6÷22
Borehole pumps



ENDURANCE E6÷12
Borehole pumps in high precision casted stainless steel



E6NVX | E8NVX
Borehole pumps in stamped stainless steel



P6÷P18
Vertical Lineshaft Pumps



MAC 6÷14
Submersible motors



MMP 6÷10
Permanent magnet submersible motors



K
Sewage pumps



KCA
High-efficiency sewage pumps



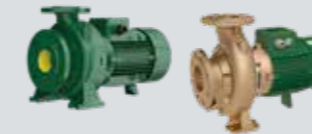
SCC
Split case pumps



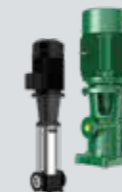
PM | PMA | PMXT
High pressure horizontal multistage pumps



NC | NCD
EN733 normalized pumps



NMC
Normalized monobloc pumps



CVX | CVD | HV
Vertical multistage pumps



BOOSTER
Installation in dry chamber for submersible pumps



GREEN BOX
Remote management systems



CONTROL SYSTEMS
Inverter

exclusive systems and patents

Advanced solutions designed to improve performance, reduce maintenance and ensure maximum reliability in all operating conditions.



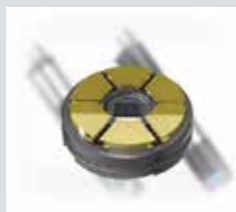
DRYWET
Oil cooling system allowing the use of a single pump in submerged or dry pit installations

CAPRARI INTERNATIONAL PATENT



FIXING SYSTEM
Ultra-fast adjustment system for impeller ensuring installation and maintenance in less than a minute

CAPRARI INTERNATIONAL PATENT



HT BEARING
High-strength bearing ensuring extreme reliability when subjected to high axial thrusts

CAPRARI INTERNATIONAL PATENT



DEFENDER
Corrosion protection accelerating passivation and extending the service life of stainless steel components

CAPRARI INTERNATIONAL PATENT



SAND-OUT SYSTEM
Exclusive system guaranteeing reliability and safe starting even in the presence of large quantities of sand

CAPRARI INTERNATIONAL PATENT



CONDUCTIVITY PROBE
Immediate water infiltration protection in the oil chamber to protect the electrical components

CAPRARI INTERNATIONAL PATENT



SMART-FIX SYSTEM
A fastening system for the valve-pump casing which is resistant to high pressures over 70 bar

CAPRARI INTERNATIONAL PATENT



K+ NON STOP
Exclusive system with four combined effects for continuous operation in wastewater



MOTOR PROTECTOR
Device to protect the pump-motor coupling and the mechanical seal of the motor against sand



C PLUS
Motor with reinforced insulation, ideal for applications with frequency converters and high temperatures

E6÷22

Borehole pumps



TECHNICAL SPECIFICATIONS AND ADVANTAGES

- High efficiency
- HT Bearing (*Caprari International Patent*)
- Defender (*Caprari International Patent*)
- Product customization

MATERIALS

- Cast iron
- Stainless steel
- Bronze
- Duplex
- Super-Duplex

TECHNICAL DATA

| | |
|--------------------------|-----------|
| Q - Flow rate up to | 420 l/s |
| H - Discharge head up to | 700 m |
| Power up to | 440 kW |
| Dimensions | 6" to 22" |

APPLICATIONS

Water collection | Pressure boosting | Industrial applications

E6NVX | E8NVX

Borehole pumps in stamped stainless steel



TECHNICAL SPECIFICATIONS AND ADVANTAGES

- High energy savings
- Robustness and reliability
- Abrasion resistance

MATERIALS

- Stainless steel

TECHNICAL DATA

| | |
|--------------------------|----------|
| Q - Flow rate up to | 37 l/s |
| H - Discharge head up to | 440 m |
| Power up to | 110 kW |
| Dimensions | 6" to 8" |

APPLICATIONS

Water collection | Pressure boosting | Industrial applications

ENDURANCE E6÷12

Borehole pumps in high precision casted stainless steel



TECHNICAL SPECIFICATIONS AND ADVANTAGES

- High efficiency
- HT Bearing (*Caprari International Patent*)
- Defender (*Caprari International Patent*)
- Ideal for aggressive liquids

MATERIALS

- Stainless steel
- Duplex
- Super-Duplex

TECHNICAL DATA

| | |
|--------------------------|-----------|
| Q - Flow rate up to | 190 l/s |
| H - Discharge head up to | 850 m |
| Power up to | 440 kW |
| Dimensions | 6" to 12" |

APPLICATIONS

Water collection | Pressure boosting | Industrial applications

P6÷P18

Vertical Lineshaft Pumps



TECHNICAL SPECIFICATIONS AND ADVANTAGES

- Flexibility of application
- High reliability
- High efficiency
- Ease of maintenance

MATERIALS

- Cast iron
- Stainless steel
- Bronze
- Duplex
- Super-Duplex

TECHNICAL DATA

| | |
|--------------------------|-----------|
| Q - Flow rate up to | 350 l/s |
| H - Discharge head up to | 280 m |
| Power up to | 440 kW |
| Dimensions | 6" to 22" |

APPLICATIONS

Water collection | Pressure boosting | Industrial applications

MAC 6÷14

Submersible motors



TECHNICAL SPECIFICATIONS AND ADVANTAGES

- Motor protector (*Caprari International Patent*)
- High thrust bearing (*Caprari International Patent*)
- Rewindable motor
- PE2+PA winding for VSD use

MATERIALS

- Cast iron
- Stainless steel
- Bronze
- Duplex
- Super-Duplex

TECHNICAL DATA

| | |
|-----------------------------------|-----------|
| Power up to | 440 kW |
| Resistance to axial thrusts up to | 80.000 N |
| Liquid temperature up to | 65°C |
| Dimensions | 6" to 14" |

APPLICATIONS

Water collection | Pressure boosting | Industrial applications

K

Sewage pumps



TECHNICAL SPECIFICATIONS AND ADVANTAGES

- Drywet system (*Caprari International Patent*)
- Fixing system (*Caprari International Patent*)
- Non Stop system
- Atex version

MATERIALS

- Cast iron
- Stainless steel
- Bronze
- Cast iron with epoxy coating

TECHNICAL DATA

| | |
|--------------------------|---------------|
| Q - Flow rate up to | 1,700 l/s |
| H - Discharge head up to | 66 m |
| Flange dimensions | 1-1/2" to 20" |
| Engine power up to | 345 kW |

APPLICATIONS

Wastewater treatment and transport | Industry | Stormwater

MMP 6÷10

Permanent magnet submersible motors



TECHNICAL SPECIFICATIONS AND ADVANTAGES

- Motor protector (*Caprari International Patent*)
- High thrust bearing (*Caprari International Patent*)
- Rewindable motor

MATERIALS

- Cast iron
- Stainless steel
- Bronze
- Duplex
- Super-Duplex

TECHNICAL DATA

| | |
|-----------------------------------|-----------|
| Power up to | 250 kW |
| Resistance to axial thrusts up to | 70.000 N |
| Liquid temperature up to | 65°C |
| Dimensions | 6" to 10" |

APPLICATIONS

Water collection | Pressure boosting | Industrial applications

KCA

High-efficiency sewage pumps



TECHNICAL SPECIFICATIONS AND ADVANTAGES

- Drywet system (*Caprari International Patent*)
- Fixing system (*Caprari International Patent*)
- Non Stop system
- Atex version
- High efficiency (IE3 motor)

MATERIALS

- Cast iron
- Stainless steel
- Bronze
- Cast iron with epoxy coating

TECHNICAL DATA

| | |
|--------------------------|--------------|
| Q - Flow rate up to | 250 l/s |
| H - Discharge head up to | 85 m |
| Flange dimensions | 2-1/2" to 8" |
| Engine power up to | 35 kW |

APPLICATIONS

Wastewater treatment and transport | Industry | Stormwater

SOC

Split case pumps



TECHNICAL SPECIFICATIONS AND ADVANTAGES

- IE3 – IE4 – IE5 efficiency motors
- Split case pumps for faster maintenance and inspection
- Horizontal/vertical installation designs
- Application with liquid temperature up to 140°C

MATERIALS

- Cast iron
- Stainless steel
- Bronze
- Duplex
- Super-Duplex

TECHNICAL DATA

| | |
|--------------------------|---------------|
| Q - Flow rate up to | 2,700 l/s |
| H - Discharge head up to | 250 m |
| Flange dimensions | 2-1/2" to 14" |
| Power up to | 3,000 kW |

APPLICATIONS

Water collection and treatment | Irrigation | Industry

NC | NCD

EN733 normalized pumps



TECHNICAL SPECIFICATIONS AND ADVANTAGES

- Application with liquid temperature up to 140°C
- Compliant to EN733 (DIN24255) standard
- Back pull-out system
- IE3 – IE4 – IE5 efficiency motors

MATERIALS

- Cast iron
- Stainless steel
- Bronze
- Duplex
- Super-Duplex

TECHNICAL DATA

| | |
|--------------------------|---------------|
| Q - Flow rate up to | 420 l/s |
| H - Discharge head up to | 110 m |
| Flange dimensions | 1-1/2" to 10" |
| Power up to | 355 kW |

APPLICATIONS

Aqueducts | Firefighting | Civil and industrial water supply | Conditioning

PM | PMA | PMXT

High pressure horizontal multistage pumps



TECHNICAL SPECIFICATIONS AND ADVANTAGES

- Axial/radial suction
- Adjustable packing or mechanical seal
- Axial thrust compensation system
- Double shaft support
- Efficiency over 80%

MATERIALS

- Cast iron
- Stainless steel
- Bronze
- Duplex
- Super-Duplex

TECHNICAL DATA

| | |
|--------------------------|--------------|
| Q - Flow rate up to | 160 l/s |
| H - Discharge head up to | 1000 m |
| Flange dimensions | 2-1/2" to 5" |
| Power up to | 700 kW |

APPLICATIONS

Snowmaking | Desalination | Irrigation | Industry | Offshore

NMC

Normalized monobloc pumps



TECHNICAL SPECIFICATIONS AND ADVANTAGES

- Compact design
- Reliability
- Standard dimensions
- Easy maintenance
- Back pull-out system
- Efficiency greater than 80%
- One-piece or short shaft

MATERIALS

- Cast iron
- Stainless steel
- Bronze
- Duplex

TECHNICAL DATA

| | |
|--------------------------|---------------|
| Q - Flow rate up to | 450 l/s |
| H - Discharge head up to | 160 m |
| Flange dimensions | 1-1/4 " to 6" |

APPLICATIONS

Oxygenation | Heating | Cooling

CVX | CVD | HV

Vertical multistage pumps



TECHNICAL SPECIFICATIONS AND ADVANTAGES

- High-pressure range
- Flexibility
- Onboard VSD

MATERIALS

- Cast iron
- Stainless steel
- Bronze

TECHNICAL DATA

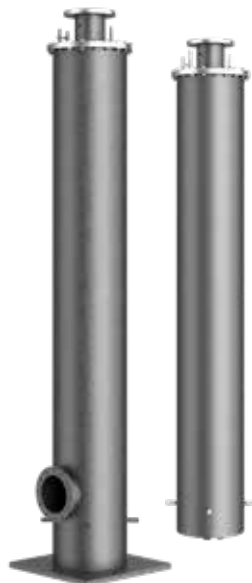
| | |
|--------------------------|----------|
| Q - Flow rate up to | 50 l/s |
| H - Discharge head up to | 315 m |
| Flange dimensions | 1" to 6" |

APPLICATIONS

Washing and cleaning | Water treatment | Pressure boosting

BOOSTER

Installation in dry chamber for submersible pumps



TECHNICAL SPECIFICATIONS AND ADVANTAGES

- Ease of assembly and execution
- Vertical/horizontal installation
- Ability to integrate into existing systems
- Ideal for applications with high-temperature liquids
- Low noise level

MATERIALS

- Galvanised steel
- Stainless steel
- Duplex
- Super-Duplex

APPLICATIONS

Water collection | Industry | Snowmaking | Desalination

GREEN BOX

Remote management systems

The device allows performance data (flow rate, pressure, temperature, vibrations, etc.) to be monitored, collected, managed and downloaded. The device's active function allows the electric pumps' parameters to be modified remotely and, if the defined threshold limits are exceeded, the machines to be stopped/restarted.



TECHNICAL SPECIFICATIONS AND ADVANTAGES

- A single application for all pumps
- Easy configuration
- Reduced consumption, increased efficiency
- Permanent connection: Ethernet, Wi-Fi, LTE
- Real-time performance monitoring
- Remote diagnostics



CONTROL SYSTEMS

Inverter

Due to the significant daily load variations in water and wastewater treatment plants, the implementation of a parameter control system can generate significant savings compared to traditional solutions. The wide range of accessories and solutions available makes the system highly customisable. Quick and easy configuration settings for pumping systems reduce installation times, ensuring maximum energy efficiency and perfect motor control.



TECHNICAL SPECIFICATIONS AND ADVANTAGES

- Low energy consumption
- Low maintenance costs
- Low operating costs
- Quick and easy installation

exclusive technical consultancy

Caprari offers a premium technical consultancy service, delivering end-to-end solutions throughout every stage of a project. From initial study and analysis to prototyping, production, commissioning, and after-sales support, we ensure our customers receive expert guidance at every step.

Our dedicated and highly skilled Application Engineering team conducts in-depth feasibility studies for bespoke and specialized applications. They provide prompt, reliable feedback on heavy-duty products and address the technical complexities of even the most demanding tender specifications. This comprehensive approach underscores our commitment to delivering tailored solutions that meet the highest standards of performance and reliability.



creation of customized solutions

- High flow rate
- High pressure
- Design variations



definition of special metallurgies

- Bronze
- Aluminium Bronze
- Stainless Steel
- Duplex
- Super Duplex



heavy duty applications consultancy

- High temperature of pumped liquid
- High solids content in water
- Inshore and offshore marine applications
- Booster submergence



control and command panel supply

- Custom electromechanical and electronic control panels
- IoT monitoring for predictive maintenance
- Sensors
- Remote control

we make a difference in every project

Caprari is the ideal partner for OEMs, offering tailored solutions based on your specific needs. From simple configurations to fully customized projects, we guarantee the quality and reliability that define us.

Customized solutions

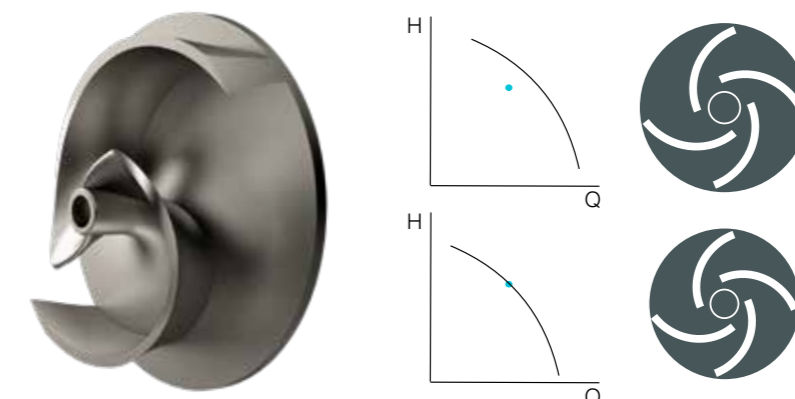
Different materials for different applications

The selection of different materials is tailored to the operating conditions and specific requirements of the application. With the support of our experts, you will find the ideal solution, ensuring optimal performance and long-lasting durability.

| CASING | IMPELLER | MEC. SEAL | SHAFT | WEAR RING |
|---|---|---|---|---|
|  |  |  |  |  |
| CAST IRON | CAST IRON | SILICON CARBIDE | AISI 303 | EPDM |
|  |  | CERAMIC | AISI 304 / 304L | NBR AND |
| BRONZE | BRONZE | GRAPHITE | AISI 316 / 316L | HNBR |
|  |  | WIDIA | AISI 420 / 420B | AISI 304 |
| CASTED / STAMPED SS AISI 304 AND AISI 316 | CASTED / STAMPED SS AISI 304 AND AISI 316 | | AISI 430 / 430F | AISI 316 |
|  |  | | AISI 431 | BRONZE |
| DUPLEX SUPER-DUPLEX | DUPLEX SUPER-DUPLEX | | AISI 630 | CAST IRON |
| | | | DUPLEX SUPER-DUPLEX | |

Impeller diameter optimization

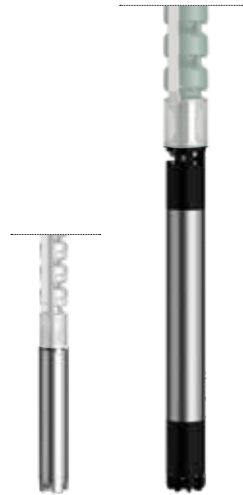
We offer the possibility to customize the impeller diameter to optimize the pump's performance curve, adapting it to the customer's required operating point.



Customized solutions

Wide motor range

The widest range of surface and submersible motors, with multiple voltages and customization options to ensure optimal performance in every application.



Borehole pumps

- Power from 4 to 440kW
- 2/4 poles
- Low and medium supply voltage
- Water filled, canned and permanent magnet versions (efficiency above 90%)
- VSD and hot water configurations

Example of customizations

- Glycol at 50%
- PT100 thermal probes
- Reinforced motor connections
- Dedicated supply voltage and cable length



Surface and VTP pumps

- Power from 0,37 to 3.000kW
- 2/4/6/8 poles
- Low and medium supply voltage
- IE4 / IE3 / IE2 efficiency class
- Horizontal and vertical configuration

- Dedicated supply voltage
- Insulated bearing for VSD application
- Various insulation and efficiency class
- Tropicalisation

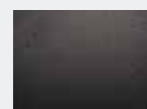


Wastewater pumps

- Power from 1,1 to 345kW
- 2/4/6/8 poles
- Low supply voltage
- IE3 efficiency class

- PT100 thermal probes
- SiC-SiC mechanical seals
- Dedicated supply voltage and insulation class
- Cable motor with other length or shielded version

Available in MATERIALS



Cast iron



Bronze



Stainless Steel



Duplex



Super-Duplex

high-resistance coatings

Caprari guarantees reliable products by improving resistance to corrosion, abrasion and wear thanks to ceramic coatings that offer excellent chemical protection, greater operational reliability and enable wear control for preventive maintenance. The pumps, classified ISO C4-H, are suitable for industrial and coastal environments and allow scheduled maintenance intervals to be extended to 15 to 25 years.



Properties

Surface preparation in accordance with standards (ISO 8501: Sa 2.5) prior to treatment

High resistance to high temperatures and mechanical wear

High chemical resistance

Protective barrier and smooth surfaces

Benefits

Extended pump service life

Increased operational safety

Improved performance

Protection against corrosion and erosion

Durable and eco-friendly

worldwide projects

Very high-capacity wastewater treatment

Location : Nosedo wastewater treatment plant (Italy)



The largest wastewater treatment plant in Europe, the Nosedo site serves the central-eastern area of Milan and is a strategic infrastructure for large-scale wastewater treatment. The facility treats up to 432,000 m³ of wastewater per day, or 18,000 m³/h (5 m³/s) in dry weather and up to 54,000 m³/h (15 m³/s) in rainy weather, effectively responding to flow variations and hydraulic load peaks. Caprari's contribution includes the supply of 75 submersible electric pumps, divided into 16 different models, selected according to specific technical requirements, with power ratings ranging from 1.2 to 25 kW.

Key advantages:

- Very high processing capacity for major urban applications
- Proven operational reliability at a European reference site
- Comprehensive support including supply, service and maintenance

Products:

75 K+ Series wastewater pumps
Total power consumption (P_{2tot}): 275 kW

worldwide projects

High-capacity water supply and distribution plant

Location : AL-GARAF District (Iraq)



A major drinking water infrastructure project was developed in the AL-GARAF district to secure a reliable supply for around 500,000 inhabitants, drawing on the vital resource of the Euphrates River. The system includes raw water intake through Caprari K+ series DN300 submersible pumps, designed to ensure dependable operation even in harsh conditions. Once treated, water is distributed across an extensive network via high-pressure Caprari split-case pumps, delivering strong performance over long distances. This integrated solution strengthens service continuity, efficiency and long-term resilience for the region, supporting sustainable growth and future needs.

Key advantages:

- Reliability of water supply
- High operational capacity
- Improved water quality
- Wide service coverage
- Efficiency and long-term cost reduction
- Positive socio-economic impact

Products:

6 split-case pumps, including 3 units rated at 90 kW equipped with river intake filters and 3 high-flow units rated at 250 kW
3 K+ series DN300 submersible pumps with a total flow rate of 1,500 m³/h for the purification tanks

worldwide projects

New generation drinking water production

Location : Pays de Meaux – Urban Community (CAPM) (France)



Completely new and built in just 18 months, this exemplary infrastructure was designed to produce 1,500 m³/h, incorporating cutting-edge technologies to guarantee optimal quality drinking water for the region's inhabitants. The facility is equipped with eight Caprari ISO 22858 standard pumps, including four NCH200-500/547 models with Caprari 200 kW IE4 motors and four NCH200-500/465 models with Caprari 132 kW IE4 motors, ensuring high performance, energy efficiency and operational reliability. Designed to meet current and future challenges, the solution combines treatment performance, resilience to climatic hazards and exemplary environmental and energy performance.

Key advantages:

- Treatment innovation: effective removal of pesticides and micropollutants using an innovative process based on micro-grain activated carbon
- Enhanced resilience: buildings located above flood levels, ensuring service continuity in the event of extreme events.
- Environmental and energy exemplarity : sustainable design incorporating landscaping solutions and controlled rainwater management.

Products:

4x ISO 22858 standardised Caprari Series pumps
NC: NCH200-500/547 with Caprari 200 kW IE4 motors with isolated bearings; 4x ISO 22858 standardised Caprari NCH200-500/465 pumps with Caprari 132 kW IE4 motors with isolated bearings
Total power: 1,328 kW

worldwide projects

High-efficiency pumping station

Location : Moos pumping station, Oensingen (Switzerland)



To respond to the increasing demand for water supply, the Moos pumping station in Oensingen required an upgrade to enhance its pumping capacity and ensure long-term operational reliability. Caprari provided an advanced solution designed to meet the new performance requirements while reducing the typical constraints of conventional surface installations.

The project involved the supply of a Caprari E12 submersible pump, equipped with a 220 HP (165 kW) motor and delivering a head of 50 metres, installed in a booster configuration. This modern approach represents an efficient alternative to traditional surface pump systems, offering improved integration within the station and minimising environmental and maintenance challenges.

Thanks to the use of dedicated cooling jackets, the installation ensures optimal motor cooling even in applications involving high-temperature liquids, increasing durability and guaranteeing safe, continuous service.

Key advantages:

- Increased pumping capacity
- Reduced maintenance requirements
- High operational capacity
- Improved water quality
- Efficiency and long-term cost reduction

Products:

E12 submersible pump, equipped with a 220 HP (165 kW) motor and delivering a head of 50 metres, installed in a booster configuration

certified quality

At Caprari, quality is embedded in every stage of our process, from design to final delivery. Our commitment is upheld by our dedicated Quality Centers, four state-of-the-art Testing Rooms, and a CTF (Customer Testing Facility) certified and managed by a specialized team.

We are equally committed to sustainability and the protection of human health. All Caprari products comply with the RoHS directive and REACH regulations, including rigorous PFAS content control, ensuring our solutions meet the highest environmental and safety standards.



System certifications



Product certifications



state-of-the-art testing facility

advanced measurement tools ensure every new project meets the highest reliability standards.



testing on request

every product can undergo hydraulic performance testing to confirm compliance with specifications.



submersible motors: 100% end of line testing

to guarantee excellent performance

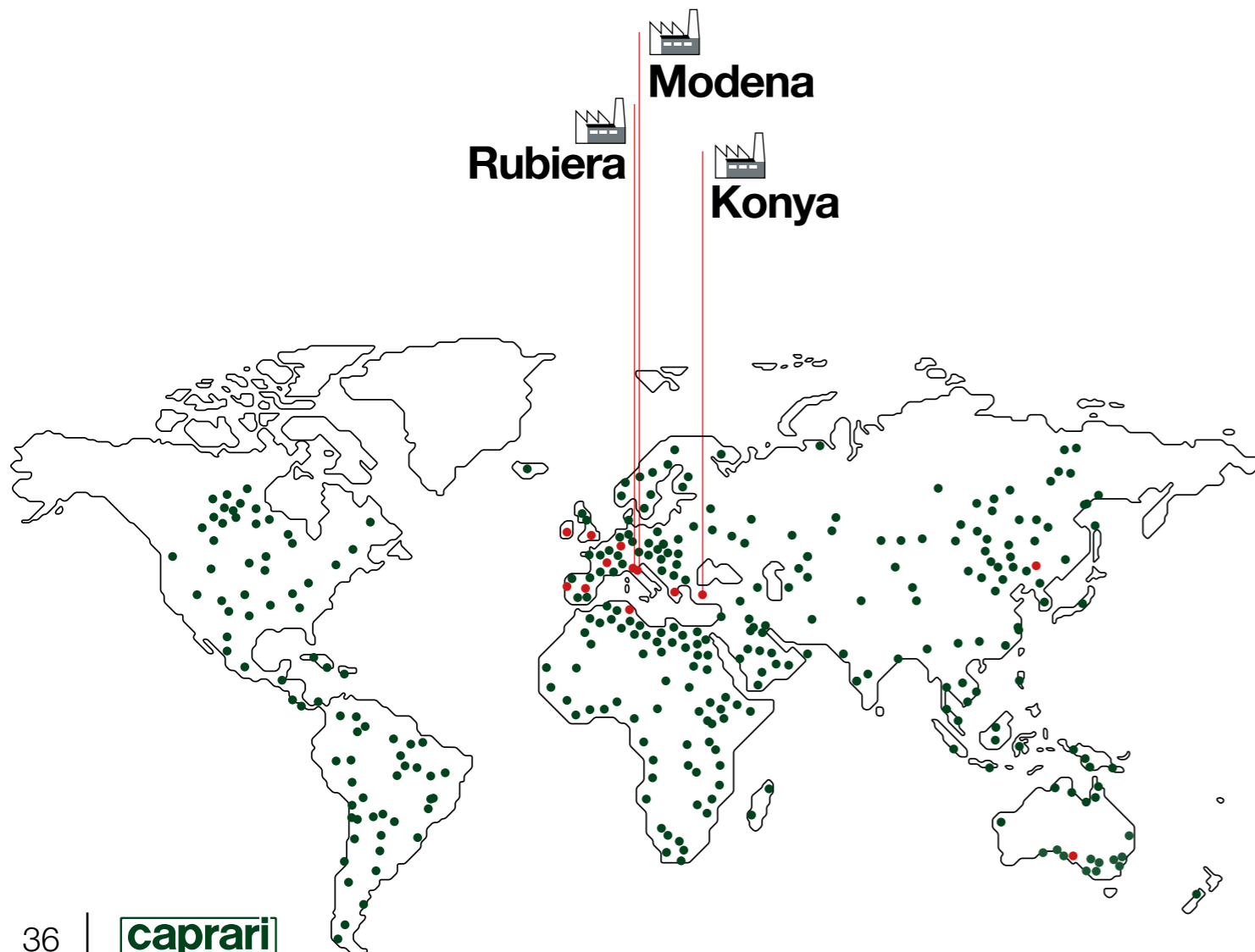


training and support

multiple support programs available

global presence, local service

Since 1945, Caprari has been designing and manufacturing efficient and sustainable water pumping solutions, investing in technology and innovation. With a global presence and international sales network, we provide top-level support, ensuring quality, reliability, and rapid availability of products and spare parts worldwide.



**fast
deliveries**
worldwide



**original
spare parts**
always available



**repairs and
maintenance**
on site and in the workshop



consulting
we collect your request
to create a tailor-made solution

 **Caprari Italia**
Via Emilia Ovest, 900
41123 Modena (Italy)
Tel. +39 059 897611
e-mail: info@caprari.it

 **Bombas Caprari SA**
C/Federico Chueca 5 - Polig. Ind. Santa Rosa
28806 Alcalá de Henares - Madrid (Spain)
Tel. +34 91 8895861
e-mail: info@bombascaprari.es

 **Caprari France SAS**
60 Av. du Centre
78180 Montigny-le-Bretonneux, (France)
Tel. +33 1 30139270
e-mail: accueil@caprari.com

 **Caprari Pumpen GmbH**
Kleemanngasse 15
D-90765 Fürth - Bayern (Germany)
Tel. +49 911 610930
e-mail: caprari@caprari.de

 **Caprari Pumps (UK) LTD**
Caprari House - Bakewell Road - Orton Southgate
Peterborough PE2 6XU (Great Britain)
Tel. +44 1733 371605
e-mail: info@caprari.co.uk

 **Caprari Hellas SA**
Industrial Area of Sindos
Municipality of Ehedorou
57022 Thessaloniki (Greece)
Tel. +30 2310 797967
e-mail: info@caprari.gr

 **Caprari Portugal LDA**
Rua Matadouro Regional Lt 46 Armaz B/C
Zona Industrial
2005-002 Santarém (Portugal)
Tel. +351 243 350610
e-mail: geral@caprariportugal.pt

 **Calpeda Pumps (Ireland) Ltd.**
Unit 5, Old Quarry Campus
Kilshane Park Blanchardstown
Co. Dublin 15 (Ireland)
Tel. +353 1 8612200
e-mail: info@calpedaireland.com

 **Caprari Tunisie SA**
Rue Annaba - Z. Ind.elle Ben Arous
2013 Ben Arous (Tunisia)
Tel. +216 79 390001
e-mail: tunisie@caprari.com

 **Caprari Pumps Australia PTY LTD**
no. 1 Maritime Court
5013 Gillman
South Australia (Australia)
Tel. +61 8 8290 0767
e-mail: sales@caprari.com.au

 **Caprari Pumps (Shanghai) co. Ltd.**
1109 Shenneng International Plaza
No.1 Central Fuxing Rd
200011 Huangpu District, Shanghai (China)
Tel. +8621 5386 5192
e-mail: info@caprari.it



HQ - Modena
Via Guido Cavani 220
41123 Modena (Italy)
Tel. +39 059 897611



Rubiera Plant
Via Mantegna 6
42048 Rubiera - RE (Italy)



Konya Plant
Polmot Motor Makina San. Ve tic. A.S.
Büyük Kayacik
Mah. Organize Sanayi Bölgesi 103.
Cad. No :15 42300 Selcuklu Konya (Turkey)



Caprari S.p.A.
Via Emilia Ovest, 900
41123 Modena (Italy)
Tel. +39 059 897611
email: info@caprari.it
www.caprari.com

